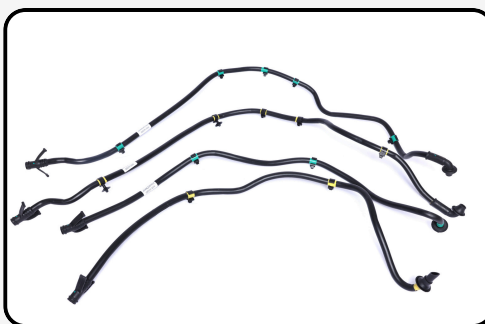
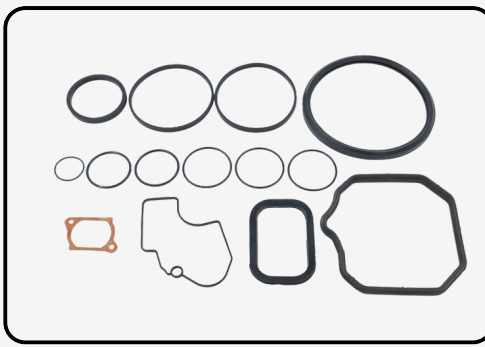


"Trusted Automotive Components Solutions since 1997".



- Rubber Moulded solutions
- Drive shaft Boots (TPE) and Bellows.
- Rubber to metal bonded solutions
- Rubber Sealing solutions
- Automotive Rear view mirrors



Scan me!

Visit Us!



Equip Auto Paris 2025
Hall 3 Booth No. G060

DRIVSHAFT BOOTS-TPE



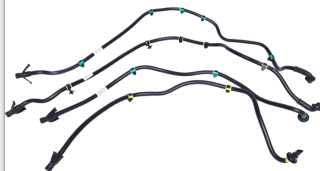
RACK-PINNION BELLOWS-TPE



LOWER ARM BUSHES



SUNROOF-DRAIN-PIPES



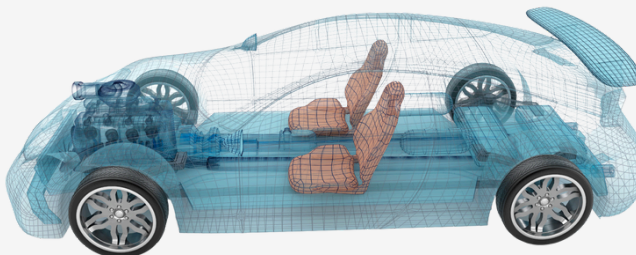
RADIATOR HOSES



EXHAUST HANGERS



PASSENGER CAR- PRODUCT RANGE



ORVM & IRVM



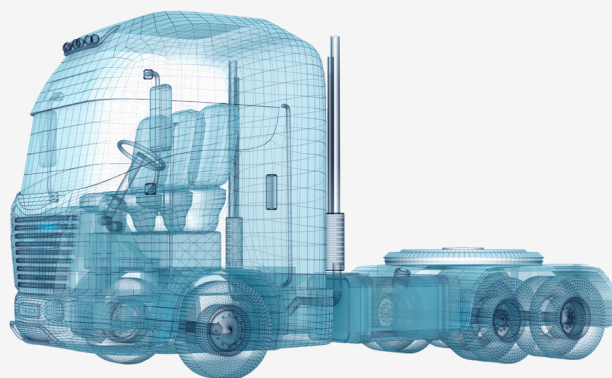
DOOR-INSULATION



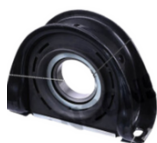
GASKETS/O-RINGS



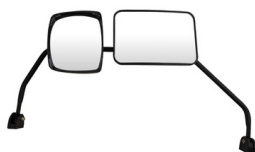
COMMERCIAL VEHICLE- PRODUCT RANGE



CENTRAL BEARING



ORVM & IRVM



SPRING BOLSTER



TORQUE ROD



SHOCK ABSORBER



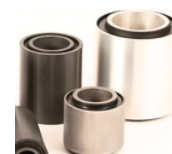
EXHAUST DUCT



**RADIATOR& COOLANT
HOSES**



BUSHINGS



About Mask Group



- **Established in 1997** – Over two decades of expertise in automotive rubber solutions.
- **Headquartered in Pune, India** – Strategically close to major OEMs & Tier-1 suppliers.
- **Comprehensive Product range for Automotive Industry** – Precision-moulded parts, extruded profiles, and rubber-to-metal bonded components.
- **Trusted across various segments** – Passenger cars, Commercial vehicles, Two-wheelers, and EV platforms.
- **Trusted by 50+ OEM and Tier 1 Customers.**



**Total Area of
Group
Companies-
30,000 sq meters.**



**Group
Manpower-
560 people**

Group Companies and Strategic Joint Ventures:



Mask Polymers - Leading supplier of Rubber moulded parts, Rubber-to-metal bonded components, and Extruded profiles and hoses for the automotive sector.



Insit-Mask – A global joint venture between Mask Polymers and INSIT Group, Italy, specializing in Constant Velocity Joint (CVJ) boots, Steering column bellows in TPE material, and Rubber gaskets.



Manas Automotive – A joint venture between Mask Polymers and Belrise Industries, focused on the manufacturing of automotive rear-view mirrors.



Mask Staples - delivering pulses, grains, spices, and plant-based proteins through advanced processing, traceable sourcing, and a zero-waste model.

Why Choose MASK!



Advanced manufacturing

State-of-the-art manufacturing facility equipped with Injection moulding machines, Compression moulding machines, Transfer moulding machines and a Continuous extrusion line.



Fully automated rubber compounding

In-house Rubber Compounding unit with-daily processing capacity of 20 metric tons, ensuring consistent quality and efficiency.



In-house mould manufacturing and designing.

With in-house mould design, development, and manufacturing, we deliver tailored solutions with faster turnaround, ensuring precision, reliability, and cost-effectiveness.



Precision Extrusion for Automotive Hoses

Specialized in extrusion of low- and medium-pressure hoses for automotive applications, engineered for durability, flexibility, and consistent performance under demanding conditions.



In-house testing and Validation facility

Our state-of-the art testing and validation facility ensures our raw material as well as our final products meet the stringent quality and performance standards of the automotive industry.



Certifications:



Scan me!



Corporate Office
Mask Polymers, AMBI MIDC Talegaon Dabhade,
Near Hyundai Plant, Pune India 410507.



www.maskpolymer.com



+918888311049 / +918600173457



ravina@maskpolymer.com
marketinghead@maskpolymer.com



<https://in.linkedin.com/company/mask-polymer>